

The background is a solid dark blue. It features several faint, light blue geometric elements: two large circles, one in the lower-left and one in the upper-right, and several straight lines of varying lengths and orientations scattered across the frame.

JENS S.



Your partner in Power Transmission Solutions

A man with grey hair, wearing a dark blue t-shirt with a logo, is working on a large industrial motor in a workshop. He is using a tool to adjust a part of the motor. The background is a blurred workshop with various tools and equipment.

We strengthen and develop our business by following our core values in everything we do:

Being far-sighted

Making things happen

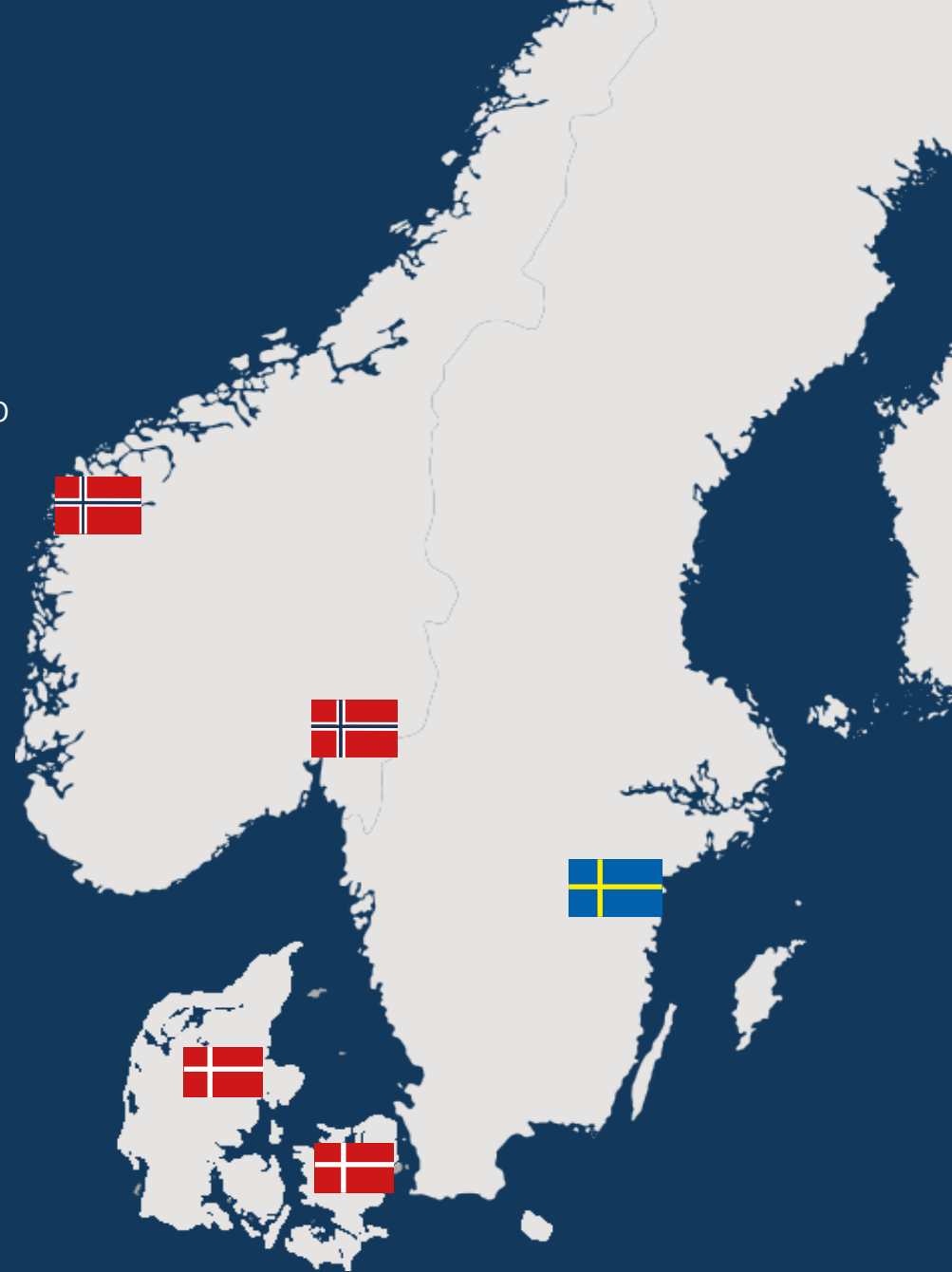
Being good to work with

Let's show you how we add value to meet your needs and expectations of being your preferred partner of Power Transmission Solutions.

JENS S.

We are represented with offices, warehouses and workshops in Sweden, Denmark, Norway and Finland. Our deep understanding of the Nordic market and our customers needs has made us where we are today, and we will continue to evolve our business in order to follow and assist our customers in every possible way.

- > **Our products**
- > **Assembly and workshop**
- > **Let's be sustainable**
- > **Customer service**





Our markets

> **Marine and offshore**
Deck machinery, drilling, marine installation,
power generation and distribution

> **Wood**
Machine builders, mobile application,
wood milling and material handling

> **Industrial automation**
Intra-logistics, linear systems, automation
and packing machinery

> **Food and beverage**
Food processing, conveyors transport
systems and packing machinery

> **Heavy industry**
Mining equipment, steel manufacturing,
heavy lifting and reactors

> **Energy and renewable**
Water, wind, power plants, HVAC and
energy storage

> **Construction**
Heavy machinery, material handling,
site preparation, concrete and cement
production

> **Agriculture**
Farming and livestock production-irrigation
systems, processing and material handling

> **Paper**
Pulp preparation equipment, paper
machines, coating machines, cutting and
winding systems

> **Lifting and moving**
Cranes and hoists, conveyor systems,
forklifts and AGVs

> **Engineering**
Automation testing equipment, control
systems, maintenance services, CAD
support

Our product range

Our chain drive range consists of a variety of roller chains, conveyor chains, leaf chains, sprockets, profiles and guides and gears and racks. In our workshop we can produce and process our chains and sprocket according to your requirements.



Roller Chains

- European standard
- American standard
- Maintenance free
- Stainless steel
- Anti corrosion



Sprockets

- Pilot bore
- Taper bush
- Finished bore
- Two simplex
- Plate wheels
- Welding hubs



Conveyor chains

- M chain
- A chain
- Z chain
- FV chain
- Double pitch
- Lumber chains



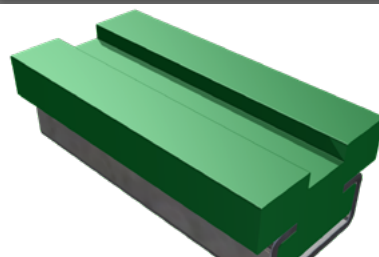
Conveyor Chain Sprockets

- Symmetrical
- One sided
- Split hub



Leaf chains

- LL
- LH



Profiles & Guides

- Chain guides



Gears and racks

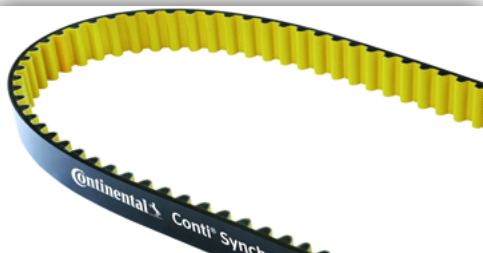
- Spur gears
- Bevel gears
- Module 1-6 in local workshop



Tensioning systems

- Tensioners
- Idler sprockets
- Spannbox

Jens S. can provide a wide range of belt drive products and solutions. We also have different opportunities for customizing. In our workshops we can adapt and modify products, in order to increase the lifetime of your application.



Timing belts

- Timing belts rubber
- Timing belts PU



Timing belt pulleys

- Pre-bored
- For bush
- Taper bush



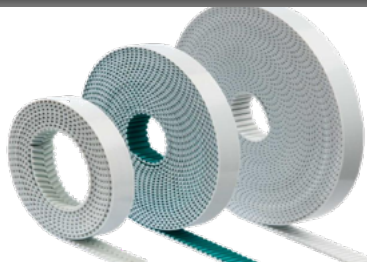
V-belts

- Classic V-belts
- Banded V- belts
- Narrow V-belts
- Open-End V-belts



V-belt pulleys

- Pre-bored
- For bush
- Taper bush



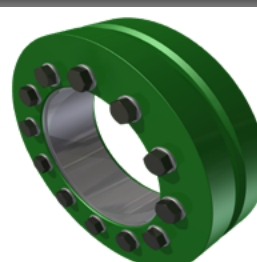
Timing belts PU Open End

- Welded
- Flex
- Special coatings
- Cleats
- EMF



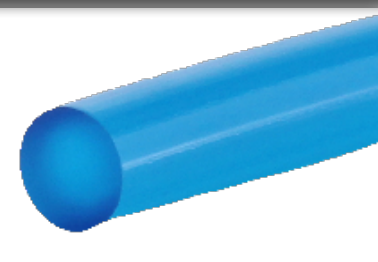
Multirib belts

- Belts
- Pulleys



Locking devices

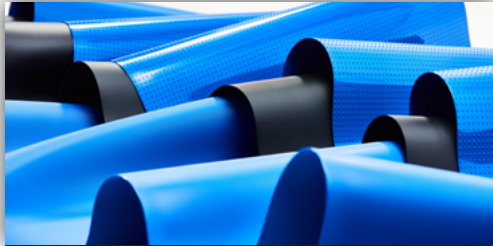
- Shrink discs
- Internal locking devices



Round belts PU

- Round belts Solid
- Round belts Hollow

Our conveyor belt range consists of various conveyor belts, flat belts, modular belts and metal belts. We can also customize and modify belts after application as well as assist with service and assembly.



Conveyor belt types

- Premium
- Drain
- PU and PVC
- Beha Homogene
- Soliflex homogene
- Ultrasync



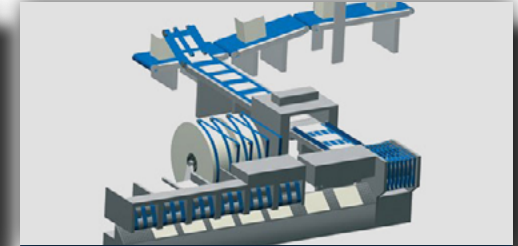
Modular belts

- Straight running belts
- Side flexing belts



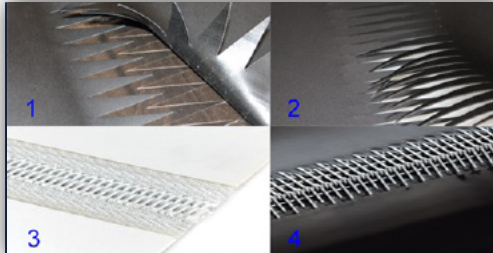
Metal belts

- Spring steel wire
- Stainless steel 1.4310
- Stainless steel K2390



Flatbelts

- Roller drive belts
- Folder Gluer belts
- QSP heating press
- Flat belts



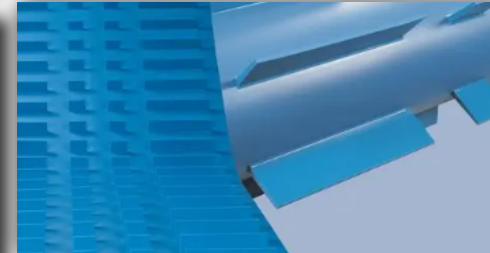
Adapting of conveyor belts

- Mechanical series A, RS and SL
- Plastic
- Finger
- Attachments



Flat- Top chain

- Metal
- Plastic



Cleats and guideropes

- PVC/PU/PE
- Fabric reinforced
- HF welding



Coverings timing belts

- Rubber
- PU & PVC
- Special coatings

Here you will find a selection of gearboxes, mechanical screw jacks, electric motors and frequency inverters. In our gear assembly we can build and modify gears and motors according to your wishes with short delivery time.



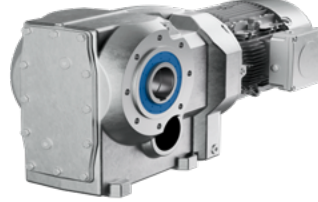
Worm gearboxes

- Silent gearboxes that represent an economic solution especially for low power ranges. They achieve high gear ratios and can be used in narrow spaces thanks to their compact design



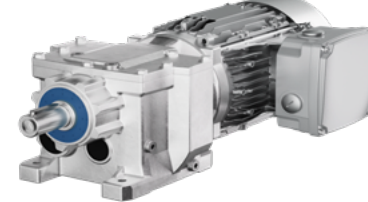
Shaft mounted gears

- Robust and reinforced construction for higher loads. High resistance to environmental stress. Are used in cranes, cooling towers and fresh and waste water applications



Bevel helical gearboxes

- Broad range of gearboxes, motors and options. High quality and mechanical efficiency. Are used for manufacturing and process industries, machine building and wind applications.



Helical gearboxes

- Complete portfolio for all ATEX areas in gas and dust loaded atmospheres. Integrated design to withstand high compactness. Are used in wood working, mixers, agitator and sewage treatment plants.



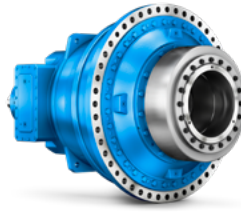
Electric motors

- Powerful and cost-efficient. From powering intricate machinery in factories to driving essential systems in buildings, these motors play a pivotal role ensuring efficiency and reliability.



Industrial gearboxes

- Characterised by high power density, compact design modularity, reliability and a favourable performance/sturdiness ratio.



Planetary gearboxes

- These products provides highest power density being compact, lightweight and powerful. Exist in many sizes in harmonic gradation close to the desired torque.



Mechanical screw jacks

- Are suited for lifting, lowering, pushing, pulling and pressing. They can be operated manually or by electric, hydraulic or pneumatic motor



Stainless steel

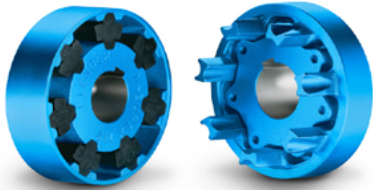
- Developed to achieve high torque, low energy use and less surface heat. Extremely applicable in the food industry. Made of electro polished Stainless Steel AISI 316.



Bevel gearboxes

- These gearboxes are low-noise, insensitive to shocks and vibrations, highly resilient with maximum power density. Wide range of areas, from medical technology to robotics.

Our coupling and brake range includes elastic couplings, torsionally stiff couplings, safety couplings, clutches, brakes, indexing gear units, free-wheels and universal drive shafts. We have different options for customization in our workshop according to your needs.



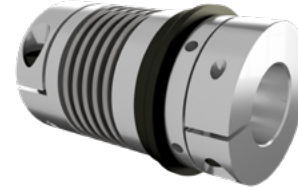
Elastic couplings

- Couplings that dampens oscillations and are economical to use for small to medium torques. A wide range of different manufacturers in different design. Suitable for applications such as pumps, ventilators and crane running gear.



Torsionally stiff couplings

- Provide highly precise transmission of high torques especially under harsh operating conditions and at high temperatures. Suitable for applications such as pumps, fans, compressors, generators and turbines



Safety couplings

- A reliable torque overload protection coupling with full mechanical disengagement. A compact design suitable for applications such as mills, wind turbines, extruders, wastewater management and conveyor technology.



Universal drive shafts

- Available with industry standard flanges and fixings as well as special executions. Options ranging from light to heavy duty and suitable for a range of applications in many different industries.



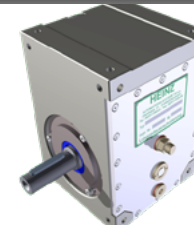
Brakes

- We have wide range of different brakes with high precision rotary drives and high torque capabilities. Suitable for applications in many different industries.



Clutches

- We can deliver a wide range of different clutches suitable for applications in different industries. Our offer includes hydraulically, pneumatical, electromechanical, hydraulic and mechanical clutches.



Indexing gear units

- Converts a constant rotary motion of the input shaft to an intermittent step movement on the output shaft. Fully mechanical design where all moving parts are in a oil bath, which makes it almost maintenance free.



Free-wheels & Rod ends

- Rod ends are used for statical and dynamical loads at varying angles. Can be used in a wide array of applications. Free-wheels are direction of rotation affected couplings. It is used for free-wheeling, indexing and as backstops.

Jens S. has a long experience with assembly of gearboxes and gearmotors and we are a certified assembly partner for both Innomatics SG and Motovario. We keep an extensive stock for a big part of our suppliers portfolio in order to serve the market with short delivery times.

Not to mention urgent deliveries for breakdown replacements when time really matters. The local stock in combination with the local assembly really makes Jens S. stand out in terms of flexibility, adaptability and speed.

Flexibility: The modular design in combination with our stock availability and assembly possibilities give us the opportunity to offer you a large variety of gearbox and gearmotor combinations.

We can also adapt and customize your solution with special surface treatment (up to C5) or marking and packing requirements.

Adaptability: Our strength really comes to play when combining the gearmotors with other products from our portfolio. Such as belts, chains and couplings. We also have an in-house machine shop and painting capabilities.

Speed: We offer a very competitive level of standard delivery times. Depending on complexity and paint specification we supply units from stock and local assembly with a normal delivery time of 1-4 weeks.



In our workshops we can adapt and modify products after our customers needs and requirements. Our machines, tools and engineering service makes it possible for our customers to optimize efficiency and increase the lifetime of their applications.



Cutting of belts



Splicing of belts



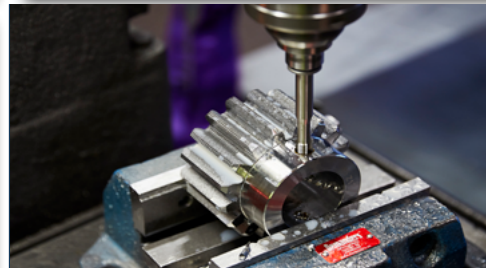
Service of conveyor belt



Surface treatment and coating of belts



CNC milling and turning



Keyways and bores



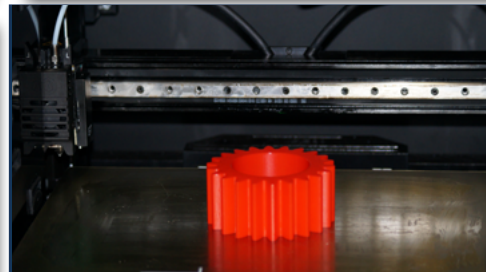
Hobing



Coordinate measuring machine



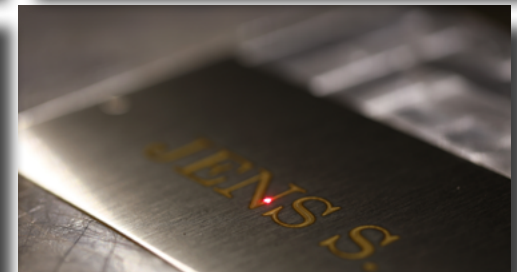
Customized chains



3D printing



Painting



Laser marking

An aerial photograph of a dense, lush green forest. A narrow, light-colored path or streambed winds through the center of the forest, creating a natural frame for the text. The trees are tall and closely packed, with varying shades of green indicating different types of foliage and sunlight filtering through the canopy.

Let's be sustainable!

Our success relies on solving our customers challenges, both today and in the future. Therefore, we always strive to learn more, develop our people and invest in sustainable innovation in order to always improve our offer!

Supply chain

Our close, long-term collaboration with our suppliers ensures high quality and sustainability in the supply chain. We make sure that audits are performed by our sustainability team and that all suppliers must fulfil the requirements of our Supplier Code of Conduct.

Our staff is our most important resource, therefore it is of most importance that we work for healthy and safe working conditions being certified according to ISO 9001, 14001 and 45001. All employees are committed to Axel Johnson Internationals Code of Ethics and we constantly work on creating an inclusive and diverse working environment.

We guide our customers to solutions of high efficiency and long lifetime. We offer our customers the circular solution of maintenance and repair. In partnership with our suppliers we promote more sustainable products.



Supplier Code of Conduct

Process control

Quality controls are crucial to ensure that products meet established standards and our customers expectations. At Jens S. we make sure to control our custom unique orders, preventing faulty products.



Digitalization

Digital transactions, transformation and information are increasing and Jens S. are continuously working with optimizing the structure required. We are exploring how EDI and OCR solutions can automatize invoices and orders, letting our staff be more efficient. Automatizing our stock through vertical storages lifts, has increased our efficiency and decreased our electricity consumption.

Customer satisfaction

To meet our customers expectations we always need to improve our customer offer. Collecting feedback from our customers and measuring the cNPS helps us give our customers the best service and customer offer possible.

Employee satisfaction

We believe that knowledge and a good working environment are important factors for increasing performance and motivation. Performance reviews and employee surveys are important tools for ensuring continuous individual development in line with the company's target and needs. We consider one of our most important values to be having a versatile workplace. We want to continue to develop a versatile work culture in which we regard diverse backgrounds, skill sets, ages and genders as advantageous.

JENS S.

Service

We are known and chosen by you because of our knowledge, reliability, high product quality and ability to keep what we promise.

With our technical know-how and our possibility to adapt, modify and manufacture components, we can service you with a complete solution focusing on extending the lifetime of their application.

Service is our top priority and response time is crucial to securing business, short -and long term. Our goal is to always response within 24 hours.

We take pride in completing orders within a fast and flexible time frame. Due to our many warehouses around the Nordic, we can give you fast and local deliveries, but also support each others stock and availability.

4

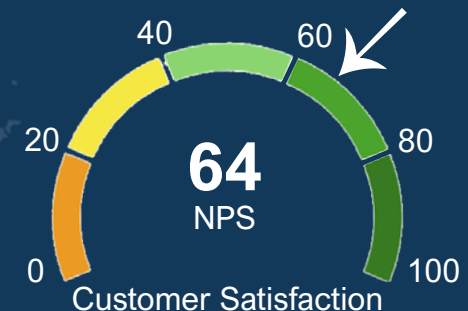
Countries

+200

km of chain

+18,000

products in stock



Discover our product portfolio and full service scope on jens-s.com

In order to exceed your expectations we constantly work to improve our service. Together we optimize the best commercial, technical and logistical solutions for your special needs.

Support



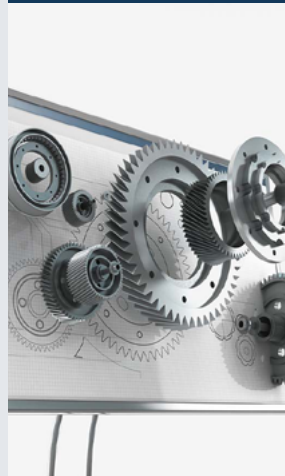
Painting & surface treatment



Assembly



CAD and technical support



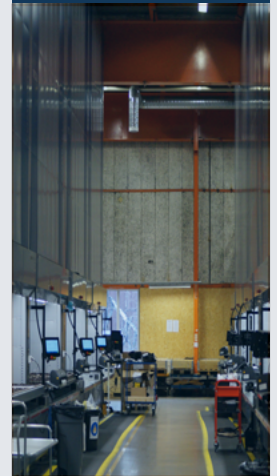
Workshop/ Customized



Packing & marking



Availability





Our success relies on continuously meeting our customers' needs by widening our total offer and services. We are open minded to new technologies and sustainable innovation. Therefore, we always strive to learn more, develop our people and improve our offers in order to solve your challenges both today and in the future.



Easy • Safe • Efficient

Jens S. Transmissioner AB

Estate address: Koppargatan 9, 602 23 Norrköping, Sweden

Postal address: Box 903, 601 19 Norrköping, Sweden

Telephone: (+46) 11-19 80 00 • [Email: forfragan@jens-s.se](mailto:forfragan@jens-s.se)

Jens S. Transmissioner A/S

Postal and estate address: Hørskætt 7, DK-2630, Taastrup

Telephone office Taastrup: (+45) 70-12 83 33

Telephone office Hadsten: (+45) 57-65 15 15

[Email: info@jens-s.dk](mailto:info@jens-s.dk)

Jens S. Transmisjoner AS

Estate address: Enebakkveien 117, 0680 Oslo

Postal address: Box 9, Manglerud 0612 Oslo

Telephone: (+47) 23-06 04 00 • [Email: post@jens-s.no](mailto:post@jens-s.no)

OY Jens S.

Estate address: Martinkyläntie 52, 01720 Vantaa

Postal address: PL 95 02271 Espoo

Telephone: (358) 9-86 76 730 • [Email: myynti@jens-s.fi](mailto:myynti@jens-s.fi)