

# FENNER® Taper Lock® Anschraubnabe

## ANSCHRAUBNABEN

Mit den von uns lagermässig geführten Anschraubnaben kann ein Wellendurchmesserbereich von 11 bis 125mm erfasst werden.

## BOLT-ON-HUBS

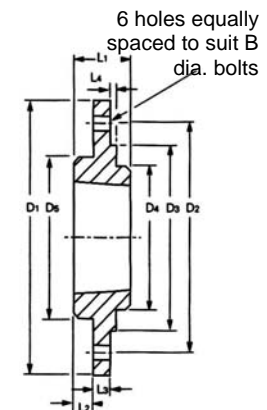
Fenner® Taper Lock® Bolt-on Hubs are designed for use with the universally accepted Taper Lock® bush.

They provide a convenient means of securing fan rotors, impellers, agitators and other devices which must be fastened firmly to shafts.



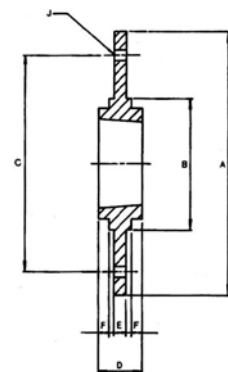
Product Code	Size	Use Bush Size	D <sub>1</sub>	D <sub>2</sub>	D <sub>3</sub> *	D <sub>4</sub>	D <sub>5</sub>	L <sub>1</sub>	L <sub>2</sub>	L <sub>3</sub>	L <sub>4</sub>	B
017C0010	BF12	1210	120	100	80	74	80	25	10	6.5	2.5	M6
017G0010	BF16	1610	130	110	90	84	90	25	10	6.5	2.5	M6
017K0010	BF20	2012	145	125	100	99	100	32	13	8.5	2.5	M8
017M0010	BF25	2517	185	155	130	120	119	44	20	11.5	2.5	M10
017P0010	BF30	3020	220	190	165	146	147	50	20	11.5	2.5	M16

\*Bore tolerance of D<sub>3</sub> +0mm/-0.05mm is recommended



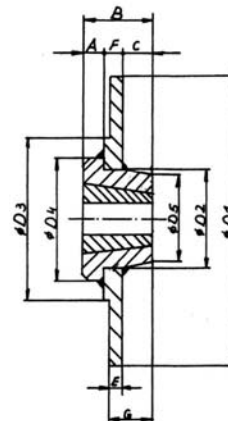
## ALLSEITIG BEARBEITETE ANSCHRAUBNABEN

Type	Taper Lock® Buchse	A	B	C	D	E	F	J
SM 12	1210	180	90	135	25	6,5	2,5	6x 7,5
SM 16	1615	200	110	150	38	7,5	2,5	6x 7,5
SM 20	2012	270	140	190	32	8,5	2,5	6x 9,5
SM 25	2517	340	170	240	45	9,5	2,5	8x 11,5
SM 30-1	3020	430	220	300	51	13,5	2,5	8x 13,5
SM 30-2	3020	485	250	340	51	13,5	2,5	8x 13,5



## STAHL-ANSCHRAUBNABEN

Naben-type	Einschweiß-nabe	TL-Buchse Nr.	Gewicht KG	A	B	C	D <sub>1</sub>	D <sub>2</sub>	D <sub>3</sub>	D <sub>4</sub>	D <sub>5</sub>	E	F	G
SM 12S	WM 12	1210	2,0	9	25	4	180	60	90	73	58	9	12	12
SM 16S	WM 16	1615	2,5	16	38	9	200	70	110	83	68	10	13	19
SM 20S	WM 25	2517	6,0	19	44	11	270	110	140	127	108	11	14	22
SM 25S	WM 25	2517	9,2	19	44	10	340	110	170	127	108	12	15	22
SM 30-1S	WM 30	3030	20,0	25	76	32	430	130	220	152	125	15	19	47
SM 30-2S	WM 30	3030	25,0	25	76	31	485	130	250	152	125	15	20	46
SM 50S	WM 30	3030	28,0	25	76	26	500	130	270	152	125	20	25	46
SM 63S	WM 30	3030	40,0	25	76	26	630	130	270	152	125	20	25	46
SM 75S	WM 40	4040	94,0	32	102	35	750	195	320	225	187	25	35	60
SM 90S	WM 150	5050	125,0	38	127	54	900	242	380	276	228	25	35	79



**ERIKS**

**Fenner®**

ERIKS GmbH Division Fenner® Antriebstechnik