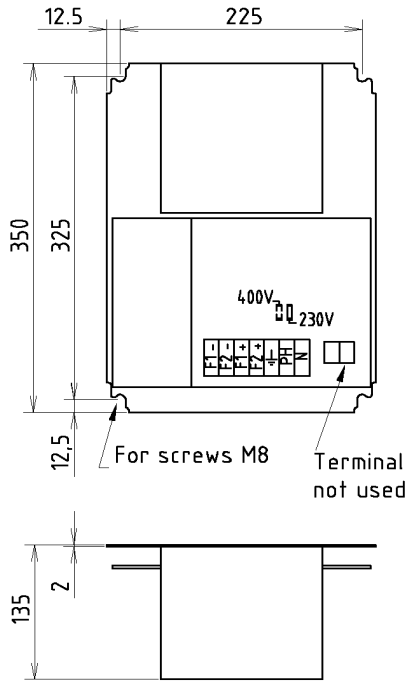


ELECTRIC POWER SUPPLIER

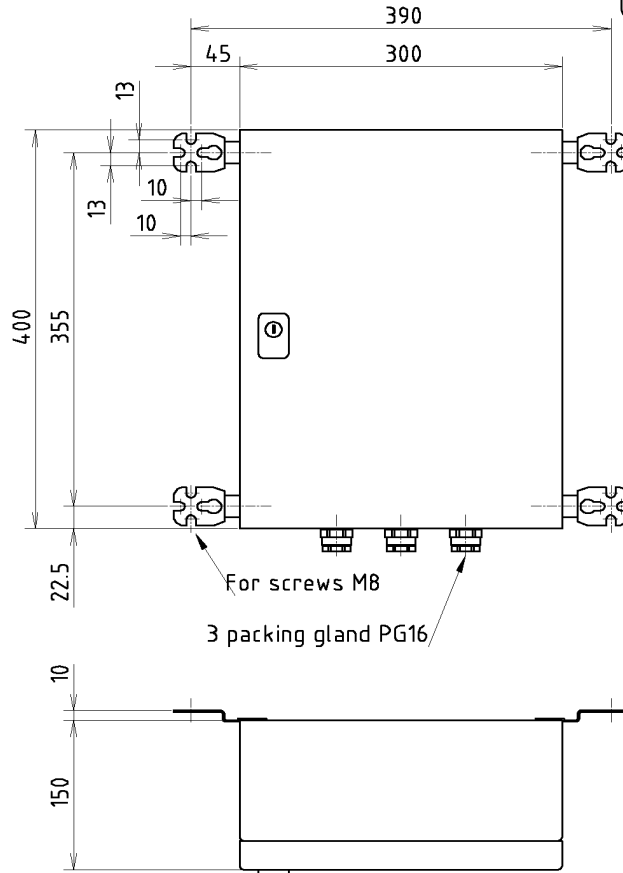
ESP 5850

Without box

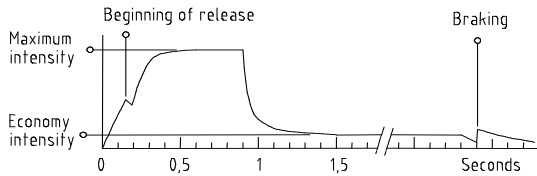


ESE 6850

In box



Output voltage curve



Options :

- Special input voltage
- Marinised
- With fan
- Without fast action card
- >> on demand

Dimensions and Data open to improvement

Supply voltage single phase	230/400 V, 50-60 Hz	-20°C < T° < 60°C
Release voltage	(Off-load) 65 V	internal R = 0,3 Ohm
Economy voltage	(Off-load) 10 V	internal R = 0,2 Ohm
Maximum connecting cable resistance	0,5 Ohm per caliper	
Protection rating	ESP 5850 : IP 00	ESE 6850 : IP 66 IK10
Weight	ESP 5850 : 12 kg	ESE 6850 : 16 kg

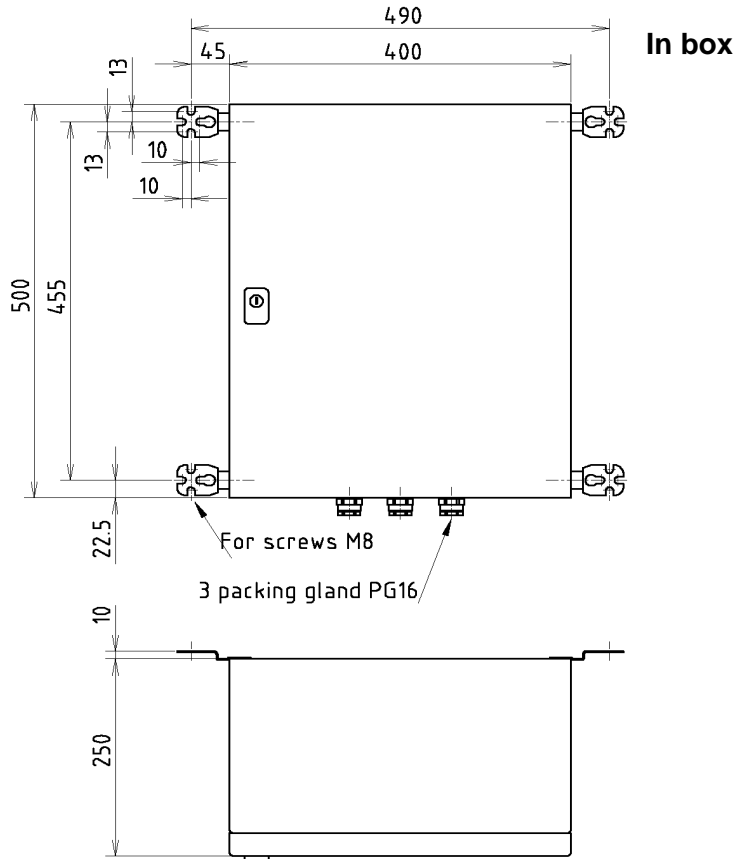
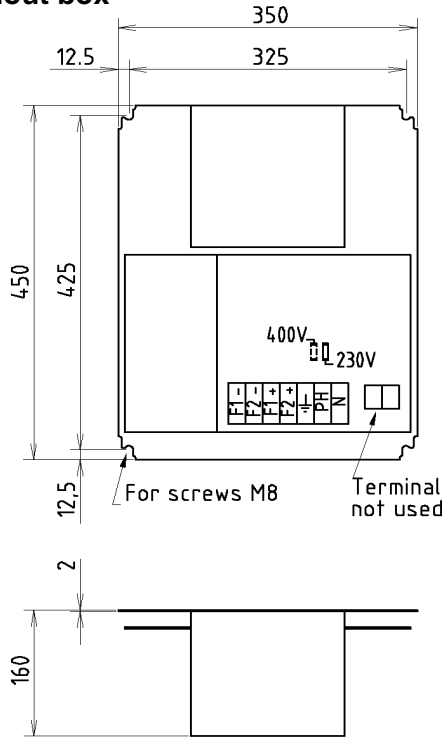
Type of brake	561 SE		560 SE		56 SE		5 SE		450 SE		4 SE		3 SE	
	1	2	1	2	1	2	1	2	1	2	1	2	1	2
Number	1	2	1	2	1	2	1	2	1	2	1	2	1	2
Cycles per Hour f = 60% at 40°C	150	150	150	150	150	150	1000	750	450	////	450	////	450	////
Release power VA	320	600	400	730	1400	2250	640	1120	1800	////	1690	////	2220	////
Economy power VA	15	35	20	45	100	185	40	80	130	////	130	////	175	////
Fuse 230 V (aM)	6	6	6	6	6	10	6	6	8	////	8	////	10	////
Fuse 400 V (aM)	4	4	4	4	4	8	4	4	6	////	6	////	8	////

ELECTRIC POWER SUPPLIER

ESP 51850

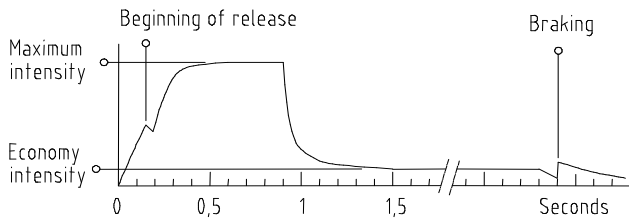
ESE 61850

Without box



Dimensions and Data open to improvement

Output voltage



- Options :**
 Special input voltage
 Marinised
 With fan
 Without fast action card
 -->> on demand

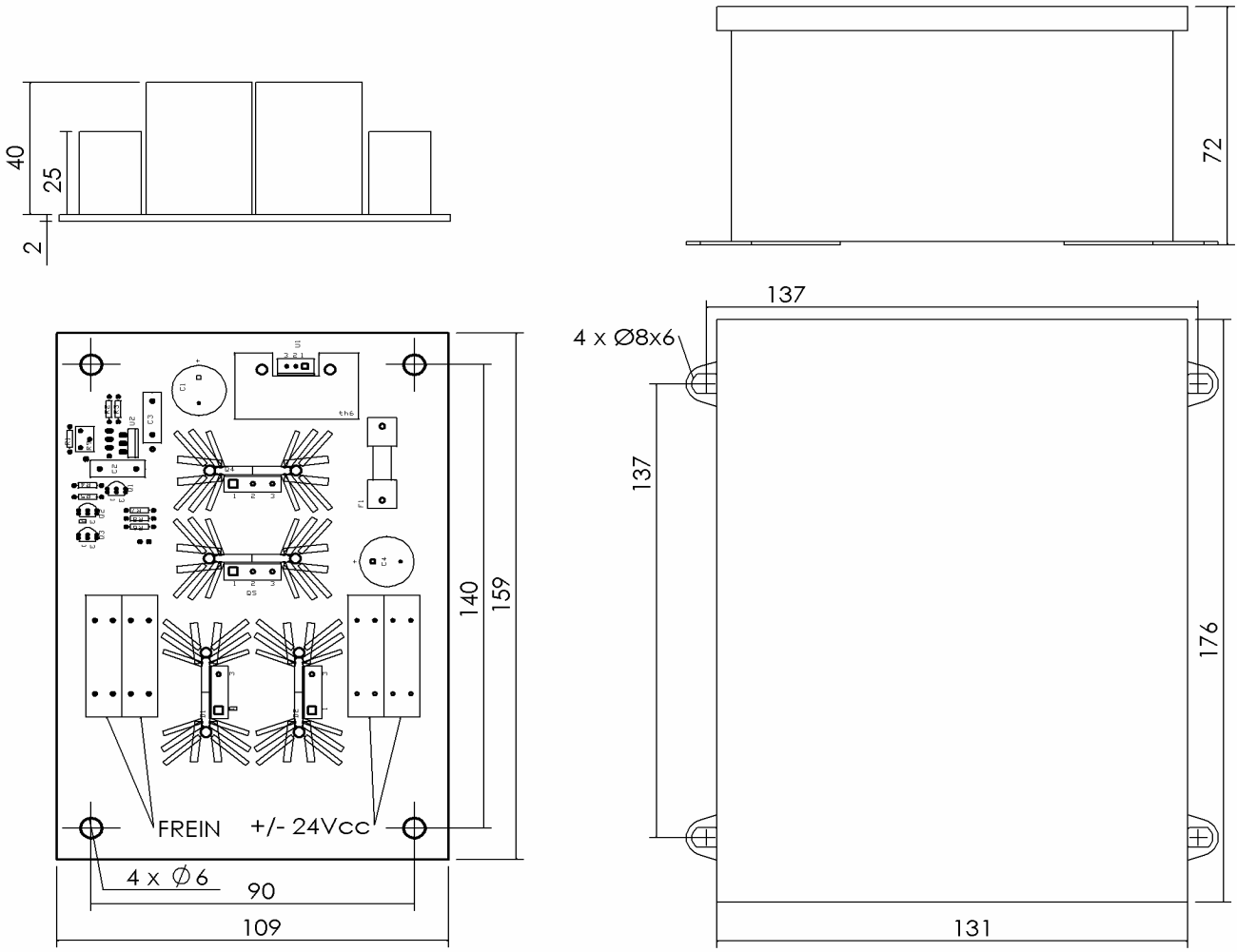
Supply voltage single phase	230/400 V, 50-60 Hz	-20°C < T° < 60°C
Release voltage (Off-load)	65 V	internal R = 0,2 Ohm
Economy voltage (Off-load)	10 V	internal R = 0,11 Ohm
Maximum connecting cable resistance	0,1 Ohm per caliper	
Protection rating	ESP 51850/ESP 51852 : IP 00	ESE 61850/ESE 61852 : IP 66 IK10
Weight	ESP 51850/ESP 51852 : 25 kg	ESE 61850/ESE 61852 : 36 kg

Type of brake	ESP 51850/ESE 61850								ESP 51852/ESE 61852					
	56 SE		5 SE		450 SE		4 SE		3 SE		ST1 SE		ST2 SE	
Number	1	2	1	2	1	2	1	2	1	2	1	2	1	2
Cycles per Hour f = 60% at 40°C	150	150	1000	1000	450	450	600	600	450	450	100	//	100	//
Release power VA	1500	2750	1200	1650	1950	3400	1900	3400	2700	4350	6700	//	6700	//
Economy power VA	100	200	75	110	125	260	100	260	200	350	500	//	500	//
Fuse 230 V (aM)	16	16	16	16	16	16	16	16	16	20	20	//	20	//
Fuse 400 V (aM)	10	10	10	10	10	10	10	10	10	16	16	//	16	//

24V ELECTRIC POWER SUPPLIER

Function:

When current is on the supplier provides 24V release voltage during 0,7sec and then switches over to 4V hold voltage.



Without box

In box

Dimensions and Data open to improvement

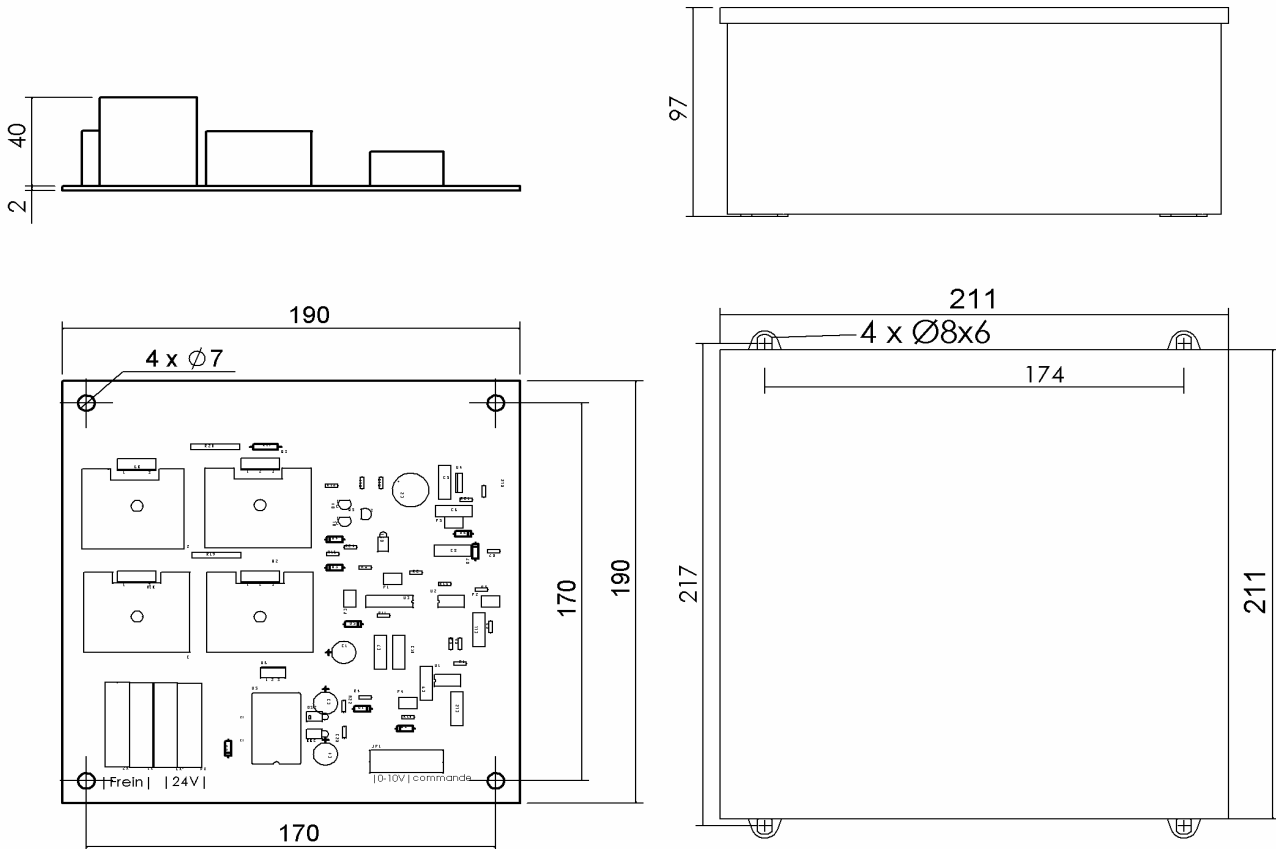
Supply voltage	24V DC
Release voltage	24V
Hold voltage	4V
Max. power	2000W
Protection	IP 66 ; IK 08
Cycles per hour	600 Cycles per hour f=60%
Fuse	Must be protected with 30A motor fuse
Weight	1kg

24V PROGRESSIVE ELECTRIC POWER SUPPLIER

Function:

When current is on the supplier provides 24V release voltage during 0,7sec and then switches over to 4V hold voltage.

The voltage variation of the input signal allows the variation of the output voltage and the adjustment of the braking force.



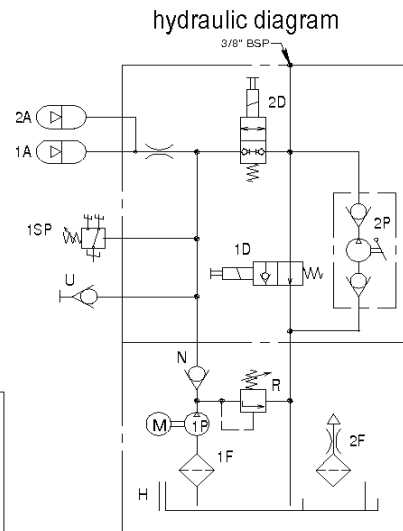
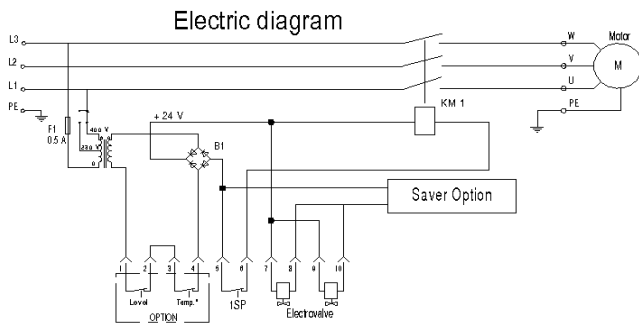
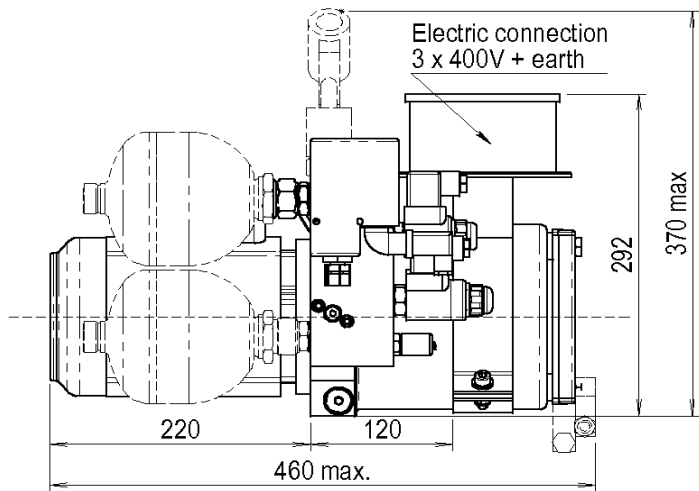
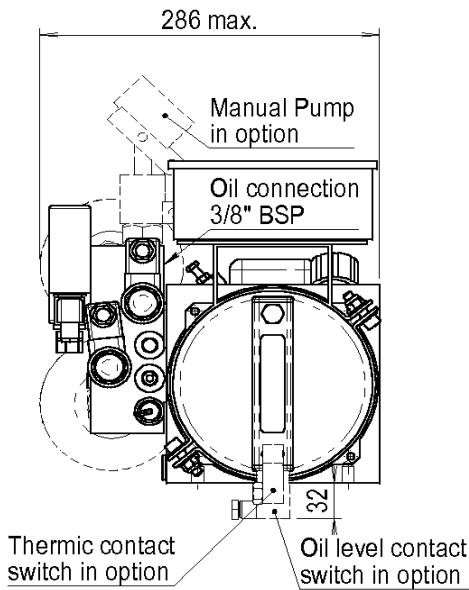
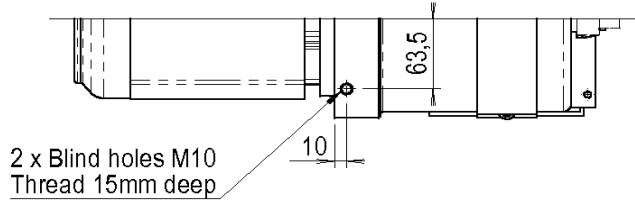
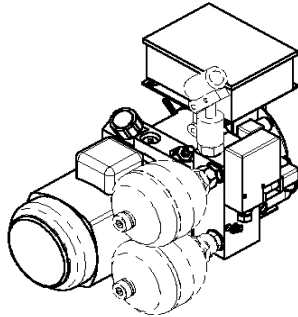
Dimensions and Data open to improvement

The braking force is proportional to the input signal
 The braking force can be regulated.

Command voltage	Between 10 et 24V
Progressive input signal	From 0 to 10V
Supply voltage	24V DC
Release voltage	24V
Hold voltage	4V
Max. power	2000W
Protection	IP 66 ; IK 08
Cycles per hour	600 Cycles per hour f=60%
Fuse	Must be protected with 30A motor fuse
Weight	1kg

CO2R HYDRAULIC POWER PACK

Files N°12473



- Pressure is produced when the voltage is activated.
 - Pump stops when pressure is reached.
 - Pressure is released when the voltage is unactivated.

OPTIONS :
 - Manual Pump
 - Thermic and oil level contact switch
 - Saver
 - Two accumulators (32 cl. ou 75 cl.)

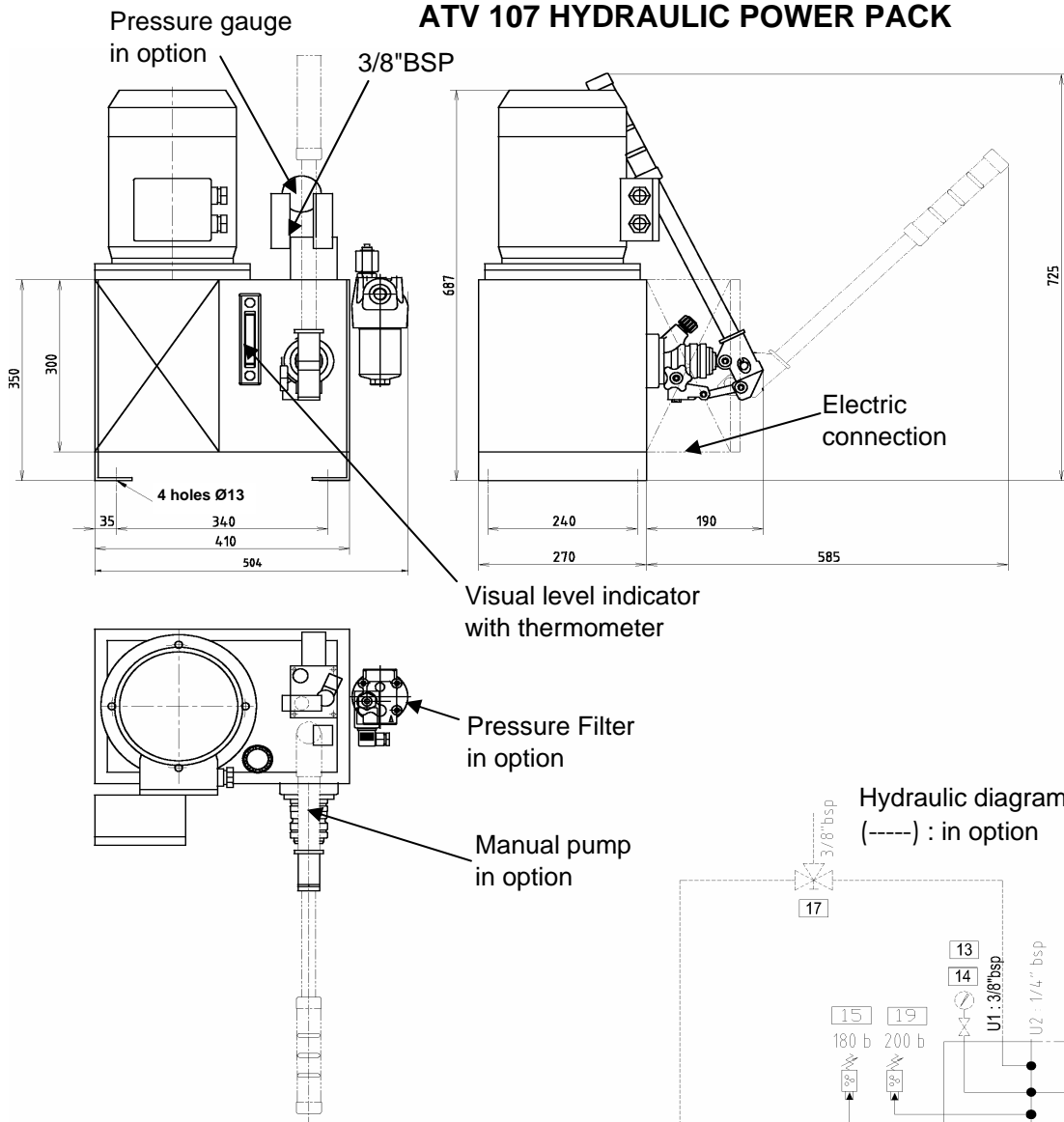
Dimensions and Data open to improvement

Oil connection	3/8" bsp
Service pressure	100 - 200 bar
Flow	1,3 l/min
Tank capacity	2,5 l (Available volume = 2 l)
Supply voltage	230/400 V AC Threephase 50 Hz
Power	650 W
Protection	IP 55
Weight	20 kg

For other applications, contact atv

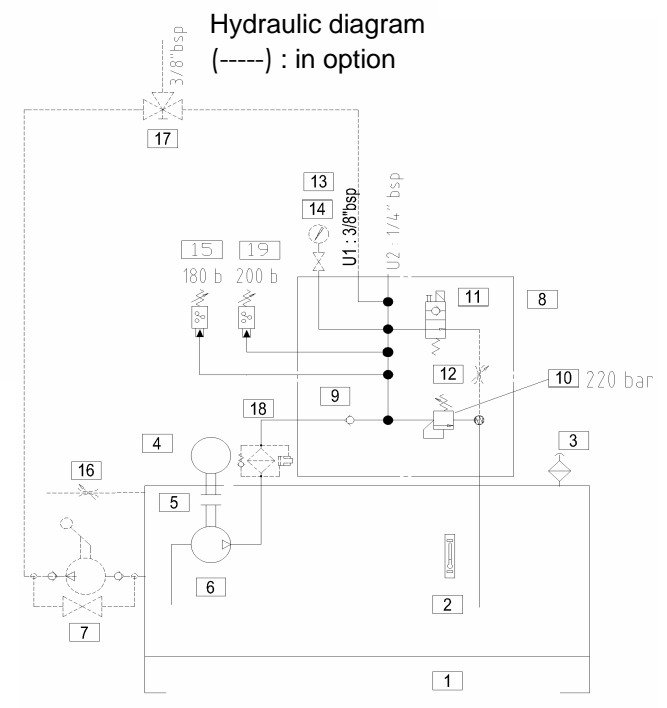
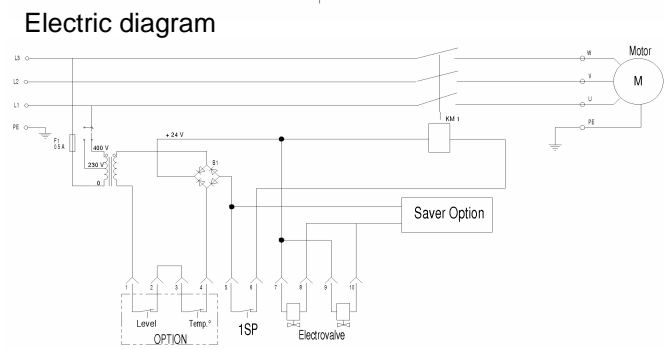
ATV 107 HYDRAULIC POWER PACK

Files N°12595



- Pressure is produced when the voltage is on.
- Pump stops when pressure is reached.
- Pressure is released when the voltage is off.

- Options :**
- Pressure gauge 13/14
 - Progressif braking 12
 - Manual pump + 3 ways valve 7/16/17
 - 3 ways valve + indicator
 - Pressure filter 18

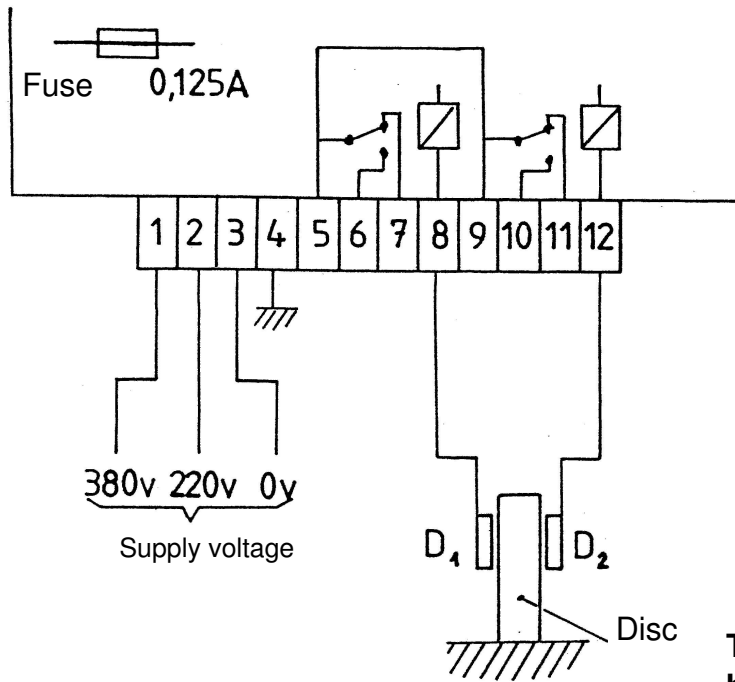


Dimensions and Data open to improvement

Oil connection	3/8" et 1/4" bsp
Service Pressure	230 bar
Flow	4,8 l/min
Tank capacity	30 l
Supply voltage	230/400V AC Treephase 50Hz
Power	2,2 kW
Protection	IP 55
Weight	55kg

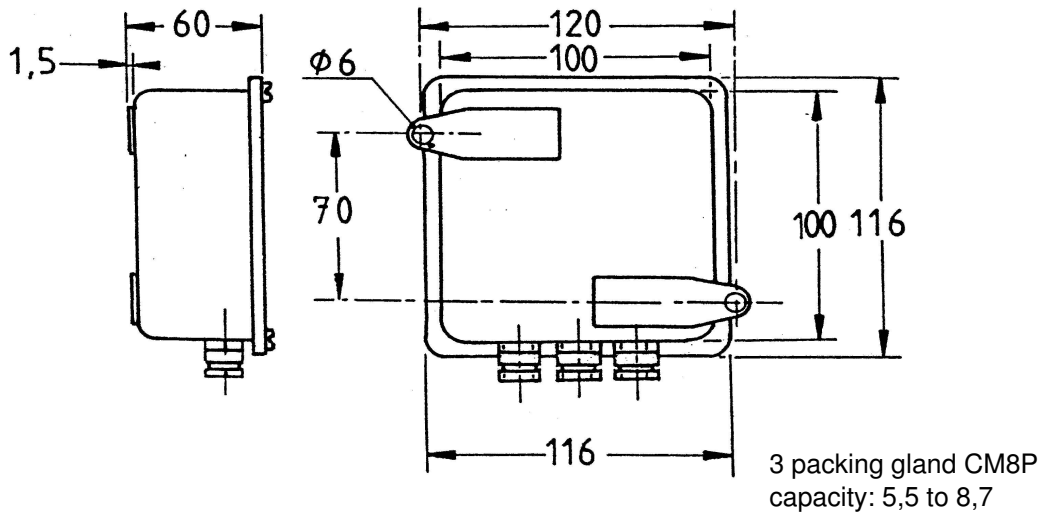
For other applications, contact ATV .

Pad wear detection box



The disc must be earthed

Box dimensions:



Dimensions and Data open to improvement

**This box runs like a switch, passing when the lining is weared.
 It is used with wear detector pads
 Two pads can be connected.
 Voltage of detection circuit is 24V DC.**